



FITTING INSTRUCTIONS

Part Number: 3952020. F/KIT: 6173659 & 6173666

Product Description: S/BAR DODGE RAM – 94-02 NFO INC TUBE 12-16.5

Suited to vehicle/s: DODGE RAM PICKUPS 1998 TO 2002

Optional Fitting Kit: 3500590 – ARB FFR FOG LIGHT KIT.
3500640 - ARB AUX FOG LIGHT ADAPTOR
3500530 – ARB AUX FOG LIGHT LOOM - NON FACTORY FOG LAMP VEHICLES.
3500680 – FOG LAMP HOUSING CLEAR LENSE KIT.

WARNING

REGARDING VEHICLES EQUIPPED WITH SRS AIRBAG:

When installed in accordance with these instructions, the front protection bar does not affect operation of the SRS airbag.

ALSO, NOTE THE FOLLOWING:

- ◆ This product must be installed exactly as per these instructions using only the hardware supplied.
- ◆ In the event of damage to any bull bar component, contact your nearest authorised ARB stockist. Repairs or modifications to the impact absorption system must not be attempted.
- ◆ Do not use this product for any vehicle make or model, other than those specified by ARB.
- ◆ Do not remove labels from this bull bar.
- ◆ This product or its fixing must not be modified in any way.
- ◆ The installation of this product may require the use of specialized tools and/or techniques
- ◆ It is recommended that this product is only installed by trained personnel
- ◆ These instructions are correct as at the publication date. ARB Corporation Ltd. cannot be held responsible for the impact of any changes subsequently made by the vehicle manufacturer
- ◆ During installation, it is the duty of the installer to check correct operation/clearances of all components
- ◆ Work safely at all times
- ◆ Unless otherwise instructed, tighten fasteners to specified torque

ARB 4x4 ACCESSORIES

Corporate Head Office

42-44 Garden St
Kilsyth, Victoria
AUSTRALIA 3137

Tel: +61 (3) 9761 6622
Fax: +61 (3) 9761 6807

Australian enquiries
North & South American enquiries
Other international enquiries

sales@arb.com.au
sales@arbusa.com
exports@arb.com.au

www.arb.com.au

GENERAL CARE AND MAINTENANCE

By choosing an ARB Bar, you have bought a product that is one of the most sought after 4WD products in the world. Your bar is a properly engineered, reliable, quality accessory that represents excellent value. To keep your bar in original condition it is important to care and maintain it following these recommendations:

- Prior to exposure to the weather your bar should be treated to a Carnauba based polish on all exposed surfaces. It is recommended that this is performed on a six monthly basis or following exposure to salt, mud, sand or other contaminants.
- As part of any Pre Trip Preparation, or on an annual basis, it is recommended that a thorough visual inspection of the bar is carried out, making sure that all bolts and other components are torqued to the correct specification. Also check that all wiring sheaths, connectors, and fittings are free of damage. Replace any components as necessary. This service can be performed by your local authorized ARB Stockist.

FITTING REQUIREMENTS



IMPORTANT:

This winch bumper is suitable for Warn 15,000lb winch only.

REQUIRED TOOLS FOR FITMENT OF PRODUCT:

METRIC SOCKET SET	METRIC RING AND OPEN ENDED SPANNER SET
ELECTRIC DRILL 13 MM CAPACITY	10mm DRILL BIT
SMALL EXT CIR CLIP PLIERS	PHILLIPS AND FLAT BLADE SCREW DRIVER SETS
TAPE MEASURE OR STEEL RULE	FELT TIP MARKER PEN

HAVE AVAILABLE THESE SAFETY ITEMS WHEN FITTING PRODUCT:

Protective eyewear 	Hearing protection 
--	--

NOTE: 'WARNING' notes in the fitting procedure relate to OHS situations, where to avoid a potentially hazardous situation it is suggested that protective safety gear be worn or a safe work procedure be employed. If these notes and warnings are not heeded, injury may result.

FASTENER TORQUE SETTINGS:

SIZE	Torque Nm	Torque lbft
M6	9Nm	7lbft
M8	22Nm	16lbft
M10	44Nm	32lbft
M12	77Nm	57lbft

APPLICATION	PART No.	QTY	DESCRIPTION
BUFFER FITMENT	6151128	12	NUT FLANGE M6
	3162153	1	BUFFER LHS
	3162154	1	BUFFER RHS
SAHARA TUBE FITMENT	6151255	2	BOLT M12 X 40mm
	4581049	2	WASHER FLAT M12
	4581050	2	WASHER SPRING M12
	6131193	1	SAHARA TUBE
MOUNT BRACKETS TO VEHICLE	3756283L	1	BRACKET BAR MOUNT ASSY LH DODGE
	3756283R	1	BRACKET BAR MOUNT ASSY RH DODGE
	6151232	12	BOLT M10 X 30mm
	4581048	12	WASHER M10 SPRING
	4581040	16	WASHER M10 FLAT
	3193696L	1	TOW HOOK LHS
	3193696R	1	TOW HOOK RHS
CONTROL BOX FITMENT	3756280	1	CONTROL BOX BRACKET
	6151022	2	BOLT M8 X 25MM
	180302	8	CABLE TIE
	4581044	2	WASHER M8 FLAT
	4581046	2	WASHER M8 SPRING
WINCH	4581044	4	WASHER 3/8"
	BLB850	2	BATTERY LEAD BLACK
	BLR850	1	BATTERY LEAD RED
NUMBER PLATE FITMENT	6151017	2	BOLT M6 X 16mm
	6151128	2	NUT FLANGE M6
	6781408	1	TAPE DOUBLE SIDED
AIR DEFLECTOR FITMENT	6151132	7	NUT M8 FLANGE
	6151022	7	BOLT M8 X 25mm
	4581044	7	WASHER M8 FLAT
	6522010	1	AIR DEFLECTOR PANEL
WINCH COVER FITMENT	6151128	2	NUT FLANGE M6
	6151256	2	SCREW M6 S/STEEL BUTTON HEAD
	6191001	1	WINCH COVER EXTRUSION
	6522009	1	WINCH COVER
	4581304	2	WASHER M6 S/S
BAR TO MOUNT ASSEMBLY	6151255	4	BOLT M12 X 40mm
	4581050	4	WASHER SPRING M12
	4581007	4	WASHER FLAT M12 LARGE
	4581048	4	WASHER SPRING M10
	6151026	4	NUT M10
	6151232	4	BOLT M10 X 25mm
	4581040	8	WASHER FLAT M10
FOG LAMP HOUSINGS TO BULL BAR	3163082	1	FOG LAMP HOUSING KIT
CB	3162152	2	PLASTIC PLUG DIA16

FITTING PROCEDURE – PREPARATION TO VEHICLE



1. Remove the bumper bar from the vehicle.

2. **Optional Fog Lamp fitment:**

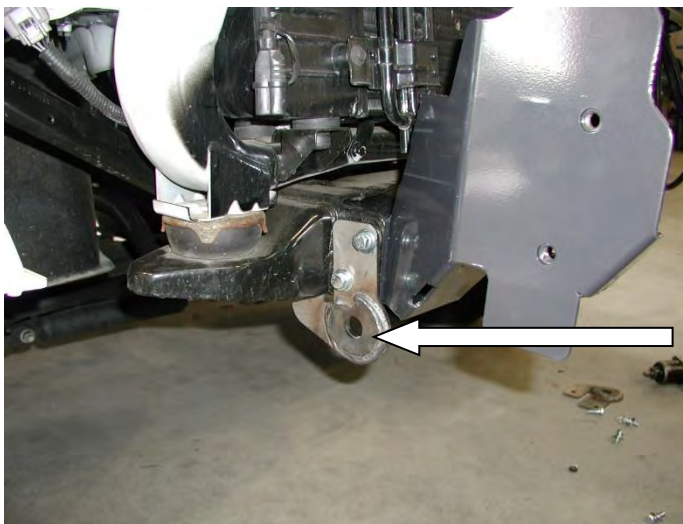
For vehicles with Factory Fog lamps:

Connect RH & LH Fog Lamp wiring using 3500640-ARB Aux fog light adaptor and connect to Factory Fog Lamp loom.

For vehicles without Factory Fog lamps:

Connect RH & LH Fog Lamp wiring using Fog Lamp Wiring Loom kit – 3500530.

3. Allow the Fog Light looms to hang freely for connection to the Bull Bar Fog Lights at Step 29.



4. Fasten the mount brackets and tow hooks to the end of the chassis rails using M10 bolts, M10 flat washers and M10 spring washers.

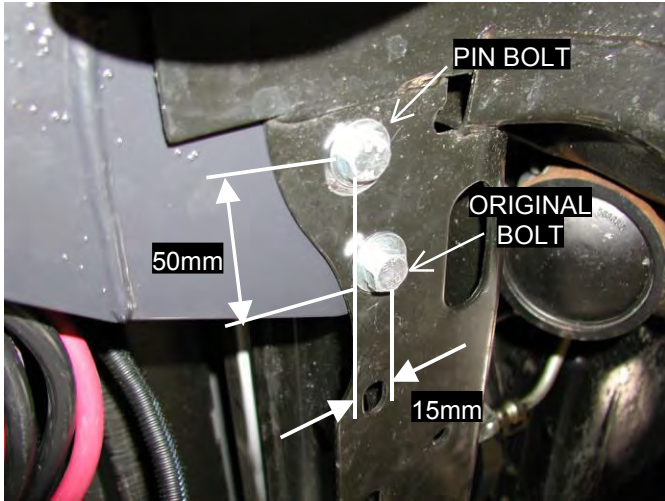
Torque to specification.



M10 - 44 Nm.

Tow hooks.

PREPARATION TO VEHICLE (Continued)




5. The mounts need to be pin bolted to the vehicle chassis.

Mark out the hole 50mm across to the outside and 15mm forward and drill using a 10mm drill bit. Drill all the way through the top of the bracket and cross member. Be careful not to damage the radiator above the cross member.

6. Fasten hole using M10 bolts, M10 flat washers and M10 spring washers.


Torque to specification.

 M10 - 44 Nm.



7. Fasten the top hole using M10 bolts, M10 flat washers and M10 spring washer.

Torque to specification.

 M10 - 44 Nm.

PREPARATION TO BULL BAR



8. Insert the side buffers through the holes and fix using the M6 flange nuts. (LH Shown).

NOTE: Do not over-tighten.

PREPARATION TO BULL BAR (Continued)



9. Push the top Sahara tube through the hole in the buffer and fasten using the M12 x 40mm bolts, washers and spring washers.

Torque to specification.



M12 - 44 Nm.

NON-WINCH FITMENT ONLY



IF FITTING A WINCH MOVE ON TO STEP 14.

10. Wrap rubber extrusion around the winch cover and trim excess.
 11. Place spacer washers over the winch cover fixing holes, located on the top face of the winch bumper.
 12. Place the winch cover on top of the winch bumper in line with the mount holes.
- Bolt together using the M6 button head stainless steel screws and M6 nuts.

Torque to specification.

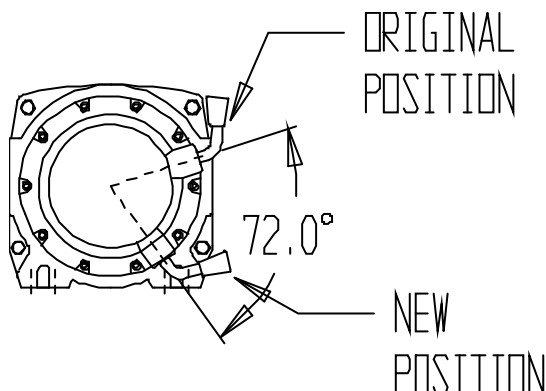


M6 - 9 Nm.



13. Bolt the number plate through the top holes using M6 X 16mm bolts and M6 flange nuts. If desired the double sided tape can be used down the sides of the number plate.

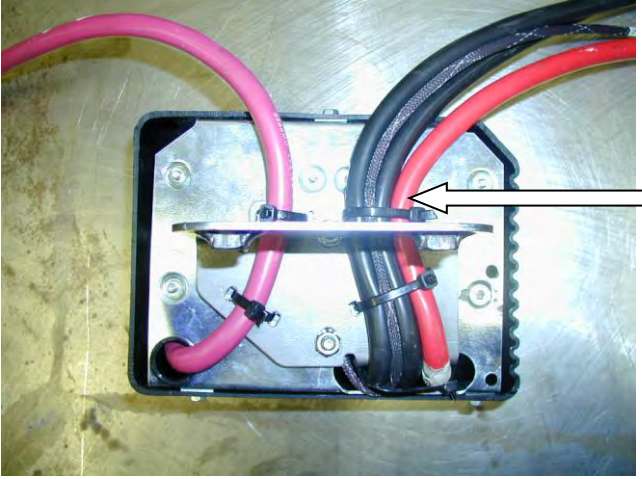
WINCH FITMENT ONLY



14. To place the winch clutch handle in a convenient location the winch gearbox must be rotated 2 hole spacing's, 72 degrees, in an clockwise direction when viewed from the gearbox end. Place the winch on its end and remove all gearbox bolts. Gently raise the gearbox just enough to rotate it. Do not completely remove the gearbox and avoid damaging the gasket. Refit all bolts and tighten.

NOTE: To avoid un-meshing the gears take care not to lift the assembly more than a couple of millimetres while rotating to the desired position.

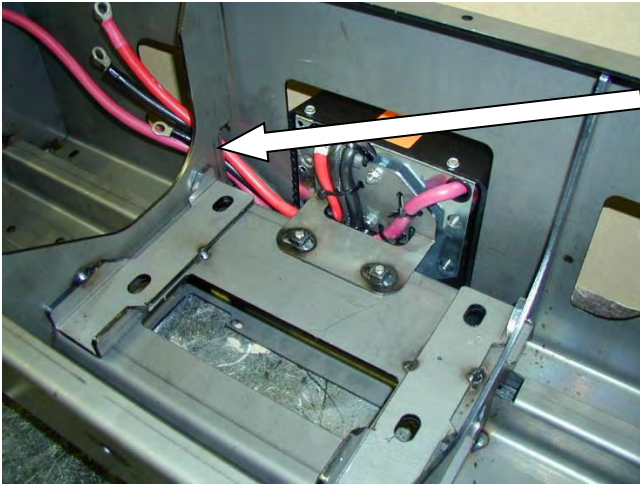
WINCH FITMENT ONLY (Continued)



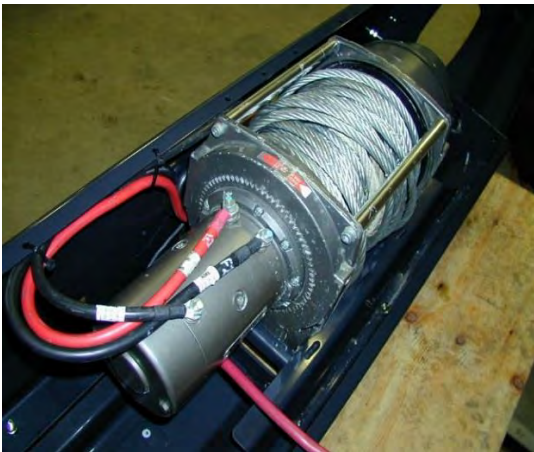
15. The three control box leads which connect to winch need to be replaced with the longer leads supplied in the fitting kit. Replace the leads with the longer leads of the same colour.

Bolt the control box bracket to the control box, (refer to photo).

Thread the cable ties through the slots in the bracket and tie down the cables to the bracket as shown in photo.



16. Mount the control box assembly to the bar and fasten to the winch mount bracket using M8 bolts, flat washers and spring washers. Run the cables through the cutout on the passenger side and cable tie through the slots on the return.



17. Position the winch inside the bar cradle with the clutch handle positioned on the driver's side. Cable spools from the bottom. Bolt in position with the roller fair lead in place.

Connect the winch control box cables to the winch motor. Refer to the Warn handbook for additional information.

NOTE: Connect the long winch + & - cables to the vehicle after the bar is installed.



18. Peel off one side of the double sided tape and adhere to the top rear side of the number plate. **Note:** Clean the adhering surfaces before applying tape with an alcohol solvent.

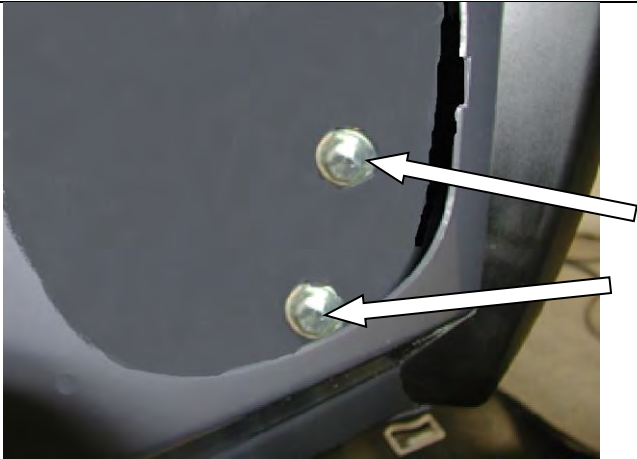
Peel off the other side of the tape and bolt to the winch bumper with the M6 X 16mm bolts and M6 flange nuts through the lower holes of the number plate.

Press firmly to the top of the number plate so the tape can properly adhere.

BULL BAR FITMENT TO VEHICLE




19. Using two people, three if a winch is fitted, position the bar assembly on the vehicle mounts. Make sure the deflector is held down for the bar to be pushed back.



20. Bolt the bar to the mounts using M12 bolts, large flat washers and spring washers. Align the bar to the profile of the guards and tighten all bolts including the mount brackets.

Torque to specification.


 M12 - 77 Nm.

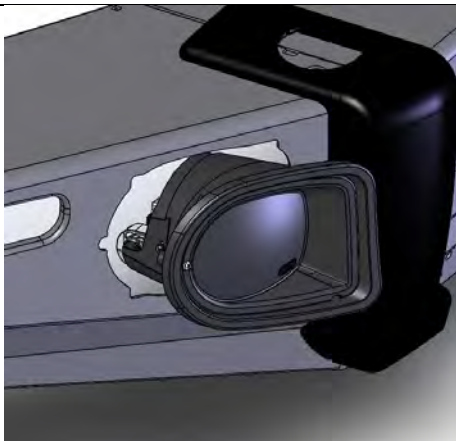


21. The bar must be pin bolted to the mount brackets. Using a drill and 10mm drill bit, drill through the upper and lower Ø10mm holes located in the mount brackets.

Fasten the holes using M10 bolts, flat washers and spring washers.

Torque to specification.

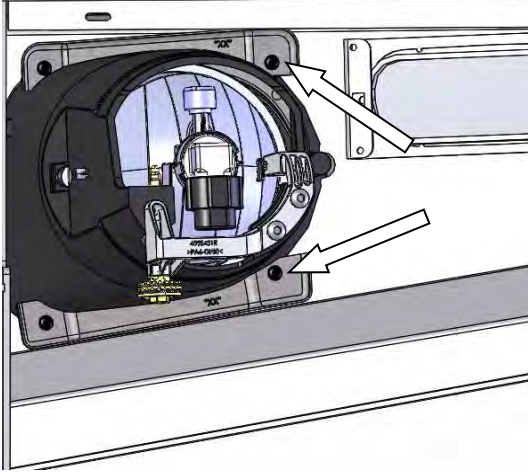
 M10 - 44 Nm.



22. Fit fog lamp housings (3163082) into the bull-bar fog lamp cutouts as shown. (RH Shown).

If fitting fog lights refer to fitting instructions (3789190) in the fog lamp housing kit (3163082) for details before mounting the housings in the bull bar.

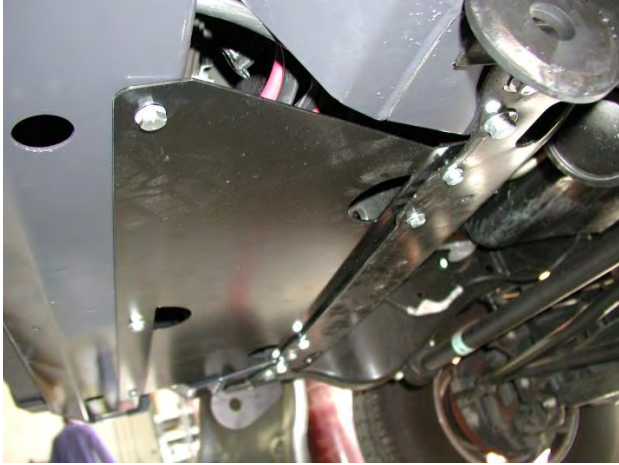
BULLBAR FITMENT TO VEHICLE (Continued)



23. Secure into position as indicated using the 2 x fog lamp clamps and 4 x self-tapping screws.

(RH Clamps Part No. 3759115R).
(LH Clamps Part No. 3759115L).

Note: Shown with generic Fog Lamp fitted in this view.



24. Bolt the air deflector to the underside of the bar and chassis cross member using M8 bolts, M8 flat washers and M8 spring washers.

Torque to specification.



M8 - 22 Nm.

25. If fitting fog lights connect the bumper fog light loom, fitted at Steps 2-3, to the fog lights.

- **Cable-tie all wiring and wiring looms into safe and convenient locations.** Ensure that all cables are installed well clear of all sharp or moving parts using cable-ties from the bolt kit.
- **Check that all lights work correctly.**
- **Check and test winch if installed.**

26. **If vehicle has been fitted with a winch.**

Feed the winch cable through the roller fair lead. Mount the hook to the end of the cable.



BULLBAR FITMENT TO VEHICLE (Continued)



27. There are two Ø16 holes located on the top face of the bar. If no CB aerials are fitted the holes can be covered with the plastic plugs provided in the fitting kit.

Place the ARB logo on the front face of the bar in the indentation.

ONCE BAR IS FITTED:

- ◆ Ensure all bolts are tensioned correctly
- ◆ All wiring is clear of sharp edges or moving surfaces and secured properly
- ◆ Piping is secured well away from sharp or moving components
- ◆ Check operation of winch if fitted
- ◆ Check all wiring and connections to turn signal lamps, sensors, headlamp washers etc. are functioning correctly.